

RL-SC-17-N11-00-28-020KA

1 Motor

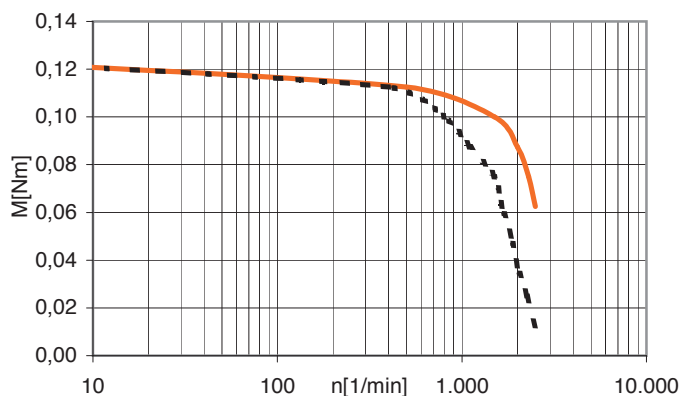
... for flange dimension

max voltage [VDC]	60
nominal voltage [VDC]	24 - 48
nominal current [A]	1,0
holding torque [Nm]	0,12
detent torque [Nm]	0,004
step angle [°]	1,8 ±5 %
resistance / phase [Ω]	2,30 ±10 %
inductance / phase [mH]	1,80 ±20 %
moment of inertia / rotor [kg/cm ²]	0,018
max. shaft load axial [N]	7
max. shaft load radial [N]	20

MOT-AN-S-060-001-028-L-C-AAAC
28 (NEMA11)

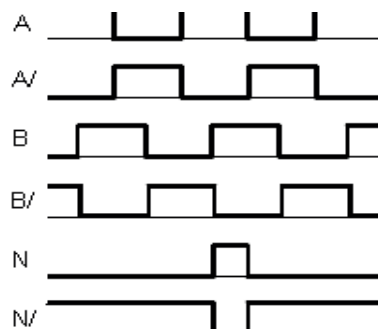
... motor characteristic

MOT-AN-S-060-001-028-...



... encoder motor

operating voltage [VDC]	5
impulse / turn [1/min]	500
zero impulse / index	yes
line-driver	RS422 protocol
signal sequence CW (motor rotation clockwise)	A



... weight [kg]

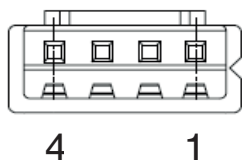
Stranded wire 0,20

... operating data

ambient temperature [°C] -10 ... +50
 max temperature rise [°C] 80
 insulation class B
 humidity (not condensing) [%] 85
 protection class engine case IP40
 CE EMV guideline

Steckerbelegung Motor

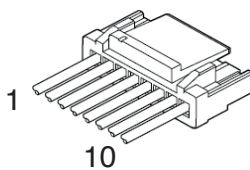
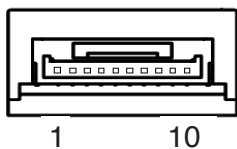
for flange dimension 28
(NEMA11)



Motor bipolar JST XHP-4			Stranded wire
pin	signal	phase	color
1	A	1	white
2	A/		brown
3	B	2	blue
4	B/		black

Pin assignmen encoder

Flange dimension 28
(NEMA11)



Encoder JST / SM10B-GHS-TB			Encoder cable JST / GHR-10V-S
pin	signal		color
1	shield		shield
2	A		white
3	A/		brown
4	B		green
5	B/		yellow
6	N/		grey
7	N		pink
8	GND		blue
9	5V DC		red
10	shield		shield

2 Robot joint

... Properties

- Main components: wave generator, flexible inner ring, outer ring
- Lightweight, compact and lubricant free

0-RL-S-17-N11-NM-28-020K0



... technical data standard version

weight	80 g
transmission	28 : 1
efficiency factor	> 0,2
max. input/ output torque	0,075 / 1 Nm
fracture torque (output)	26 Nm

3 Ini kit (Option)

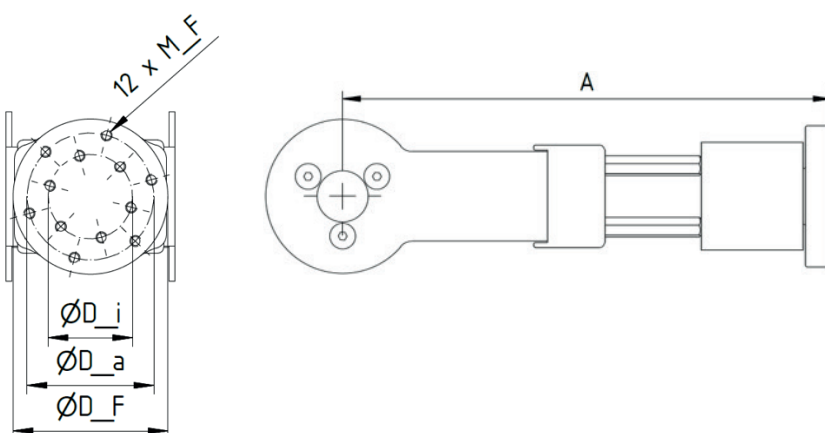
igus® art. No.	RL-S-17-IK-001
connection	INI-AB-I-025-A-AA
switching output	M8x1
switching function	PNP
power input	NO
rated op. current	10 ... 30 V DC
	100 mA

Joint construction kit

... robot joint with stepper motor

motor type	Stepper motor NEMA11
weight	500 g
max. rad. Torque (short time)	1 Nm
max. rad. Torque (permanent)	ca. 0,5 – 0,75 Nm
max. speed (at max. load)	6 rpm

Dimensions [mm]	A	M_F	D_F	D_a	D_i
RL-SC-17-N11	190,75	M4	55	45	30



Contact:

Martin Raak
 Productmanager robolink®
 Tel: +49 2203 9649 409
 Fax +49 2203 9698 409
 mraak@igus.de



igus® GmbH Spicher Str. 1a 51147 Cologne
 Tel.: +49 2203 9649 0 Fax: +49 2203 9649 222
 info@igus.eu www.igus.eu
 Issue: 10.2016